

LRES3032PF-OCP

—OCP 3.0 Dual Port 10G SFP+ Ethernet Network Adapter (MUCSE Chip Based)

Overview



LRES3032PF-OCP is a dual-port optical fiber network adapter with OCP 3.0 SFF structure developed by Shenzhen Lianrui Electronics Co., Ltd. based on the RNP N10 solution of the MUCSE controllers. It adopts the industry-leading intelligent network security control chip, has complete independent intellectual property rights, and realizes a high degree of integration of network and security in product performance.

In terms of product function: each port of the adapter supports 10G and 1G access at different rates to meet the diverse needs of customers. Unique reconfigurable processor core technology supports fast processing of offloading of various network protocols, including RSS, TSO, GRO, TCO, RCO, and IP/TCP, IP/UDP checksum offloading, etc., with MAC\VLAN\TCP_SYN and other data packet filtering and redirection functions of these data packets to improve the CPU workload processing capability.

In addition, the unique network protection technology of the adapter supports ciphertext streaming transmission between ports, and it has a guard-style protection function to achieve network attack isolation protection. It is widely used in general servers and high-end server equipments. In the same type of server equipments, this adapter performs better in domestic CPU platform equipments.

Key Features

1. An Intel solution OCP3.0 SFF structure of the dual port optical fiber 10G Ethernet network adapter;
2. With a speed rate of 1/10G;
3. It can enhance DPDK to be more efficient and flexible in packet forwarding and packet processing.

Specifications

Controller	MUCSE RNP N10
Cable medium	Optical Fiber
Fiber Type	10GBASE-SR / 10GBASE-LR / 10GBASE-Cu 1GBASE-SR / 1GBASE-LR / 1GBASE-Cu
Bracket Height	SFF
Power Consumption	7.8W
System Support	Ubuntu 18.04.5 LTS / 20.04.3
	Deepin 20 / 20.6
	CentOS 7.3 / 7.4 / 7.5 / 7.6 / 7.7 / 7.8 / 7.9
	CentOS 8.0 / 8.1 / 8.2 / 8.3 / 8.4 8.5
	Linux Mint 19.3 Tricia
	Kylin V10 / V4.0.2
	UOS V20
	NFS-CHINA V4.0
Bus Type	OCP3.0 SFF
Data rate per port	1/10Gbps
Connector	2*10G SFP+

Technical Features

Protocol Support	IEEE 802.3ae 10 Gigabit Ethernet over fiber IEEE 802.3z Gigabit Ethernet IEEE 802.3x Full Duplex and flow control IEEE 802.1AS / IEEE 802.1Q VLAN IEEE 802.3AD / IEEE 802.3ad IEEE 802.3az - Energy Efficient Ethernet (EEE) IEEE 802.1P / IEEE 802.3ac
PXE	Yes
DPDK	Yes
WoL	No
iSCSI	No
Jumbo Frames	Yes
FCoE	No
Network Virtualization	VEB / VLAN / QinQ / VxLAN / NVRGE

Environment Features

Operating Temperature	0 °C to 55 °C (32 °F to 131 °F)
Storage Temperature	-40 °C to 70 °C (-40 °F to 158 °F)
Storage Humidity	Maximum: 90% non-condensing relative humidity at 35 °C
Certification	FCC, CE, RoHS

Physical Features

PCB Size(mm)	115*76*1.6
Package Size(mm)	179*150*30
Weight(g)	**

LED Indicators

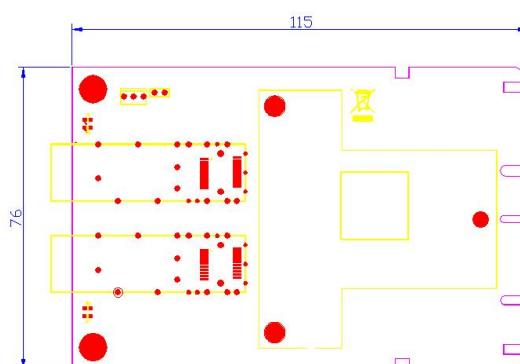
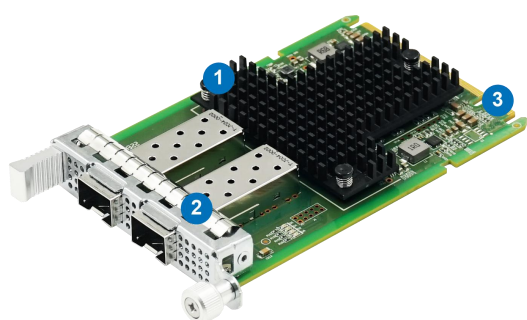
10Gbps	LINK	Green Link + Green Link
	ACT	Green Link + Green Blink

Order Information

P/N	Description
LRES3032PF-OCF	OCF 3.0 Dual Port 10G SFP+ Ethernet Network Adapter (MUCSE Chip Based)

PS: Above details are only for reference, if there is any change, no prior notice.

Product Structure



1. Heat sink
2. 2*10G SFP+ Connector
3. Golden finger interface

PS: The picture is for reference, and the actual product shall prevail.

Companion Products

Fiber NIC

- § LR-LINK PCI 100FX Desktop Adapter
- § LR-LINK PCIe 100FX Desktop Adapter
- § LR-LINK PCI 1000BASE-SX/LX Desktop Adapter
- § LR-LINK PCIe 1000BASE-SX/LX Desktop Adapter
- § LR-LINK PCIe 1000BASE-SX/LX Server Adapter
- § LR-LINK PCIe 10GBASE-SX/LX Server Adapter
- § LR-LINK PCIe 25GBASE-SX/LX Server Adapter
- § LR-LINK PCIe 40GBASE-SX/LX Server Adapter
- § LR-LINK PCIe 100GBASE-SX/LX Server Adapter

Copper NIC

- § LR-LINK PCI 10/100Mbps Desktop Adapter
- § LR-LINK PCIe 10/100Mbps Desktop Adapter
- § LR-LINK PCI 10/100/1000Mbps Desktop Adapter
- § LR-LINK PCIe 10/100/1000Mbps Desktop Adapter
- § LR-LINK PCIe 10/100/1000Mbps Server Adapter
- § LR-LINK PCIe 100/1G/10Gbps Server Adapter
- § LR-LINK PCIe 1G/2.5G/5G/10Gbps Server Adapter

Download Drivers

To get the drivers, please visit us at: <http://www.lr-link.com/support/driver.html>.

Product Quick Guide

To know the network card basic knowledge to choose the suitable NIC you need, please visit us at:

<http://www.lr-link.com/productchoose.html>.

Customer Support

LR-LINK customer Support Services offers a broad selection of programs including phone support and warranty service. For more information, contact us at Service and availability.

<http://www.lr-link.com/contactus.html>

Shenzhen Lianrui Electronics Co.,LTD.

Shenzhen Lianrui Electronics Co.,Ltd is an efficient Ethernet adapter design company with independent research and development,using Intel,Net-swift,Tehuite,Broadcom,Realtek and other manufacturers Ethernet controller, developed by our company's independent R&D design team, manufacturedby our company workshop, and then sell.

Declaration

Our products specifications come from modifying the chip manufacturer's specifications released. Product features, technical parameters, technology right, intellectualproperty rights and brand names etc.mentioned in specifications are just referenced only.There is no infringement meaning.If there is any important andsensitive content related, please contact us, we' ll delete. Thank you.

SHENZHEN LIANRUI ELECTRONICS CO.,LTD.



ADD: 9/10F 1B Block ECO Valley, Longgang Street, Longgang District Shenzhen China 518116 (Factory)

14F T10 Bldg., Sino-Ocean New World, Longcheng Street, Longgang District Shenzhen China 518172 (Office)

Tel: +86(0)755-84507909

Product Sales service@lr-link.com

Technical Support support@lr-link.com

WEB www.lr-link.com

Copyright © Shenzhen Lianrui Electronics CO.,LTD,2006-2022. All rights reserved